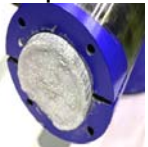




Balemaster *Dust Briquetter* A Dust Handling Solution

Balemaster's dust balers provide an ideal combination of high compaction forces while maintaining a low profile to fit under most filter systems. A high density briquette is produced that converts your airborne dust into a rock hard 70 to 80 pound per cubic foot puck.



Features & Advantages

- Streamline design uses fewer component parts than other units on the market. Most reliable available.
- Most comprehensive Touch Screen and PLC Controller in the industry. Features function and informational screens.
- Feed hopper is 16" long and is rectangular for a good fit under standard bag-house filter systems.
- Unique bale density control system automatically and continuously regulates the compressive force of the main cylinder in conjunction with the tensioning force exerted by a second density control cylinder. The Density Control System therefore maximizes the squeezing force to achieve the highest briquette density possible. No adjustments are required.
- The standard main hydraulic cylinder produces 4" diameter briquettes that are continuously extruded.
- Energy efficient hydraulic power packs from 7.5 to 10 horsepower meet varying capacity requirements.
- Heavy duty welded construction throughout.
- Engineered to be a low profile unit. With feed chute height of just 24" off floor, fits under most filter units.
- Once the feed chute is bolted to the drop chute of the bag-house (required), a positive air seal is formed and therefore, in most cases, no rotary air lock needed.

Dust Control ▲

Printers ▶

Paper Mills ▶

Recyclers ▶

Folding Carton ▶

Warehouse/Distribution ▶

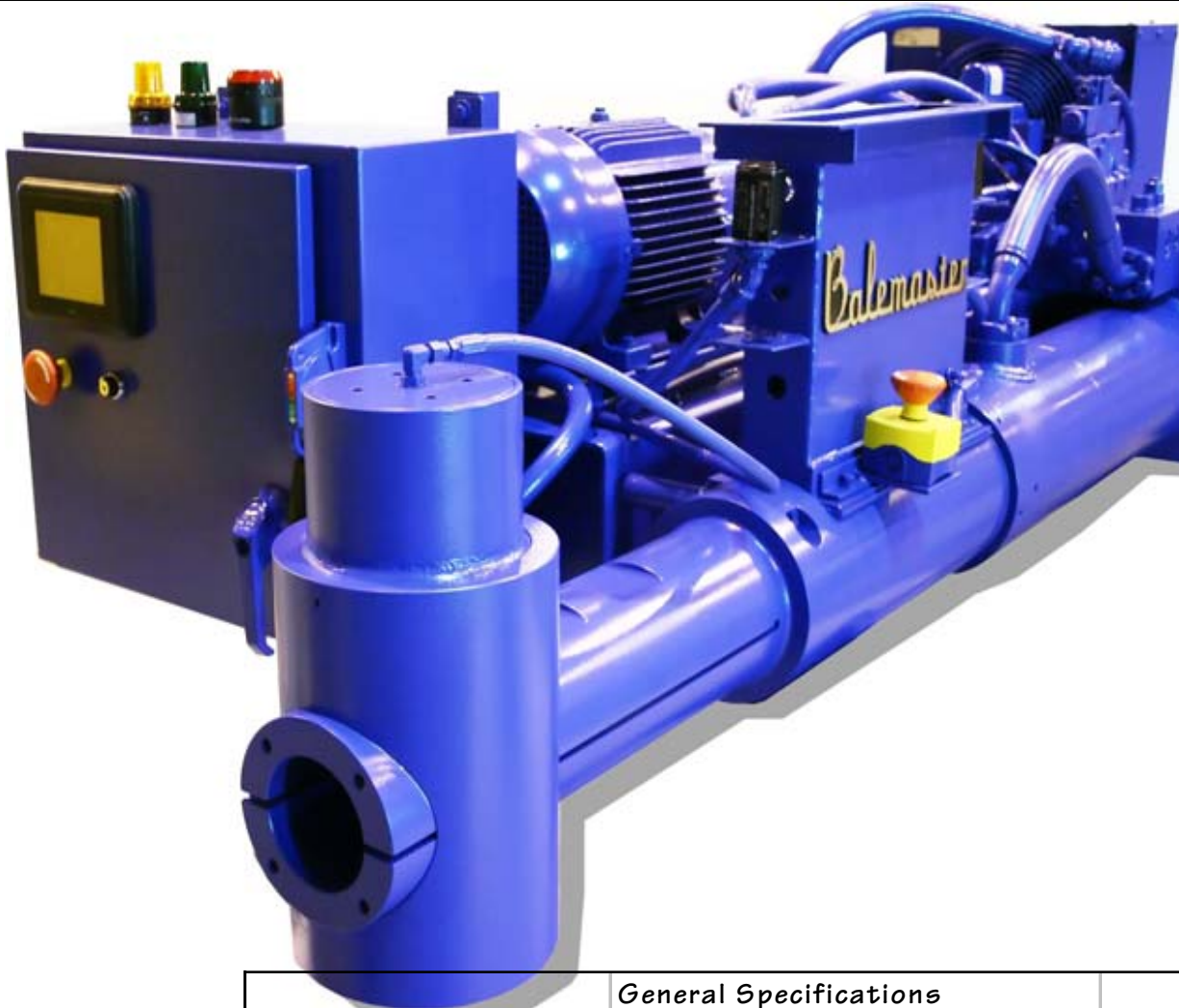
Manufacturing/Assembly ▶

NFPA Standards ▼



The new NFPA standard of 1/32" in accumulated dust thickness is all it takes to be out of compliance.

DUST BRIQUETTER



| | General Specifications | | |
|-------------------------|------------------------|-------------|-------------|
| | Model DB-36 | Model DB-52 | Model DB-70 |
| HP* | 7.5 | 10 | 15 |
| Hydraulic Regeneration | Yes | Yes | Yes |
| Strokes/min - Load | 2 | 2.5 | 4.3 |
| Sec/Stroke - Load | 30 | 24 | 14 |
| Throughput (lbs/hr) + | 100 | 150 | 250 |
| Oil Reservoir (gals) | 50 | 50 | 50 |
| Briquette Diameter (in) | 4 | 4 | 4 |
| Machine Length (in) | 104 | 104 | 104 |
| Machine Width (in) | 35 | 35 | 35 |
| Machine Weight (lbs) | 2,300 | 2,500 | 2,700 |

* Size unit at least 50% larger than anticipated throughput to allow for feeding inconsistencies, variable loose density, etc.

+ Assumes loose material bulk density of 10 lbs/cuft. Dust baler requires a consistent and uniform particle size. Requires 15% moisture content or less throughout dust in most cases.